

## Explore

### Notes

Output Created		11-JUN-2024 08:43:35
Comments		
Input	Data	C: \Users\Arry\OneDrive\Documents\Document Papa\DI\Umsida\Ari\Data terbaru.sav
	Active Dataset	DataSet1
	Filter	<none>
	Weight	<none>
	Split File	<none>
	N of Rows in Working Data File	30
Missing Value Handling	Definition of Missing	User-defined missing values for dependent variables are treated as missing.
	Cases Used	Statistics are based on cases with no missing values for any dependent variable or factor used.
Syntax		EXAMINE VARIABLES=Prokalsitonin NLR CRP /PLOT BOXPLOT NPLOT /COMPARE GROUPS /STATISTICS DESCRIPTIVES /INTERVAL 95 /MISSING LISTWISE /NOTOTAL.
Resources	Processor Time	00:00:02,39
	Elapsed Time	00:00:03,56

## Case Processing Summary

	Valid		Cases Missing		Total	
	N	Percent	N	Percent	N	Percent
Kadar Prokalsitonin	30	100.0%	0	0.0%	30	100.0%
Nilai NLR	30	100.0%	0	0.0%	30	100.0%
Kadar CRP	30	100.0%	0	0.0%	30	100.0%

## Descriptives

		Statistic	Std. Error
Kadar Prokalsitonin	Mean	13.1343	1.36017
	95% Confidence Interval for Mean	Lower Bound	10.3525
		Upper Bound	15.9162
	5% Trimmed Mean	12.7450	
	Median	11.4500	
	Variance	55.502	
	Std. Deviation	7.44998	
	Minimum	2.49	
	Maximum	32.00	
	Range	29.51	
	Interquartile Range	9.75	
	Skewness	.858	.427
	Kurtosis	.171	.833
Nilai NLR	Mean	14.7650	1.20293
	95% Confidence Interval for Mean	Lower Bound	12.3047
		Upper Bound	17.2253
	5% Trimmed Mean	14.5189	
	Median	13.1600	
	Variance	43.411	
	Std. Deviation	6.58874	
	Minimum	4.25	
	Maximum	29.35	
	Range	25.10	
	Interquartile Range	9.21	
	Skewness	.700	.427
	Kurtosis	-.160	.833
Kadar CRP	Mean	16.6330	1.29743

## Descriptives

			Statistic	Std. Error
	95% Confidence Interval for Mean	Lower Bound	13.9795	
		Upper Bound	19.2865	
	5% Trimmed Mean		16.4217	
	Median		15.4000	
	Variance		50.500	
	Std. Deviation		7.10631	
	Minimum		6.17	
	Maximum		31.50	
	Range		25.33	
	Interquartile Range		12.39	
	Skewness		.318	.427
	Kurtosis		-.972	.833

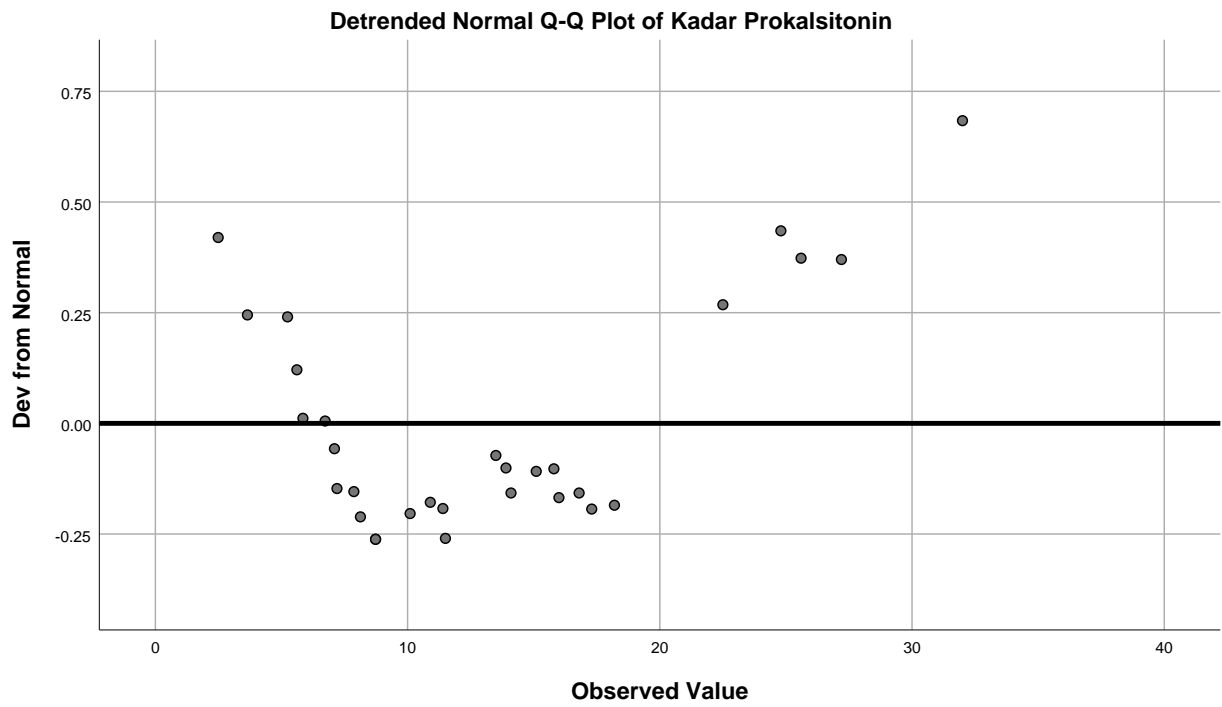
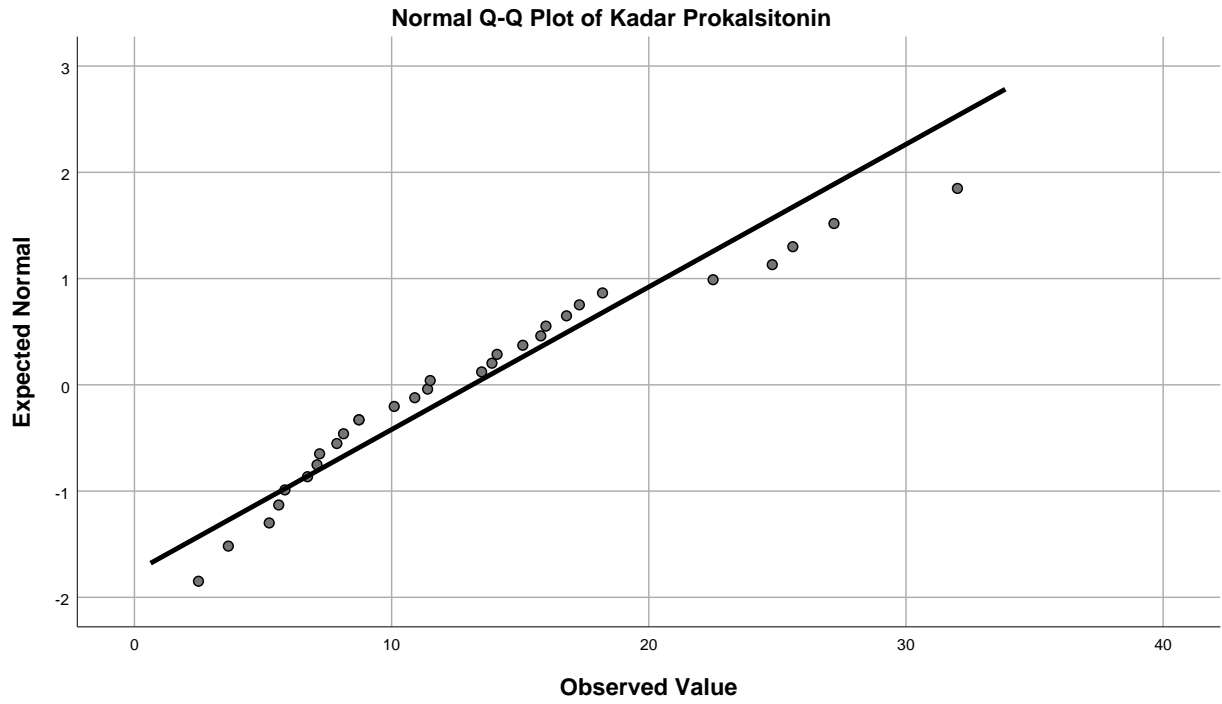
## Tests of Normality

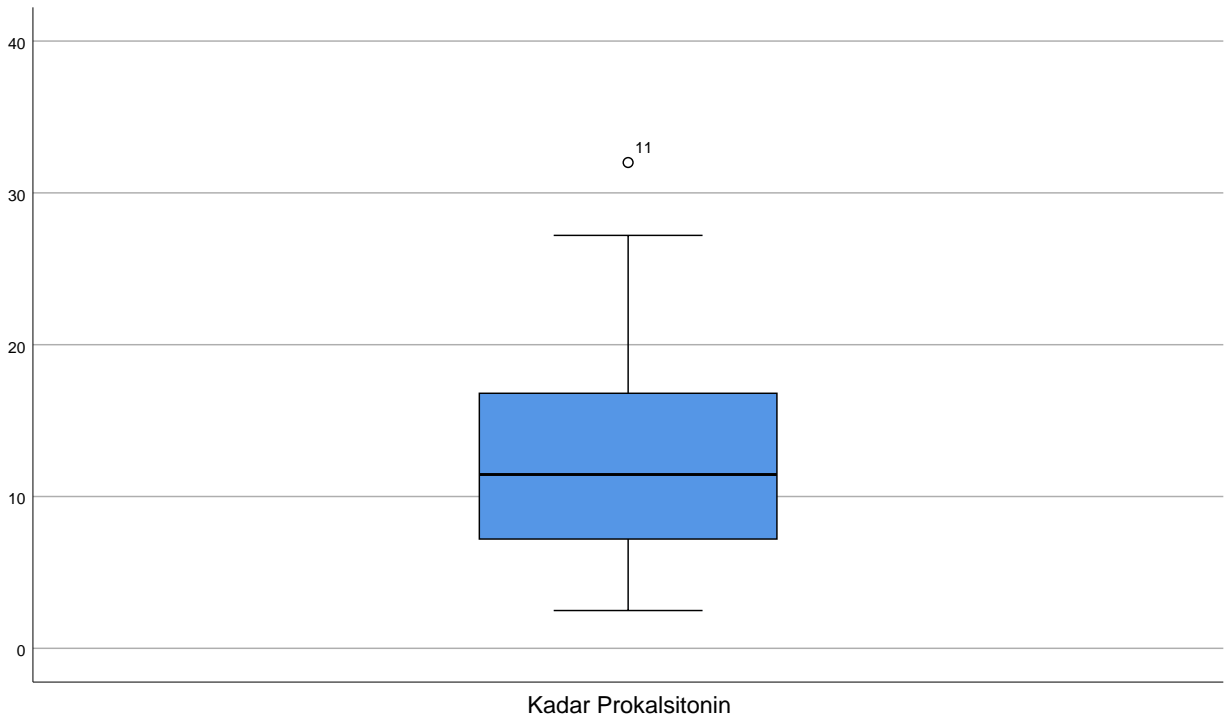
	Kolmogorov-Smirnov <sup>a</sup>			Shapiro-Wilk		
	Statistic	df	Sig.	Statistic	df	Sig.
Kadar Prokalsitonin	.123	30	.200 <sup>*</sup>	.933	30	.059
Nilai NLR	.130	30	.200 <sup>*</sup>	.945	30	.121
Kadar CRP	.102	30	.200 <sup>*</sup>	.951	30	.178

\*. This is a lower bound of the true significance.

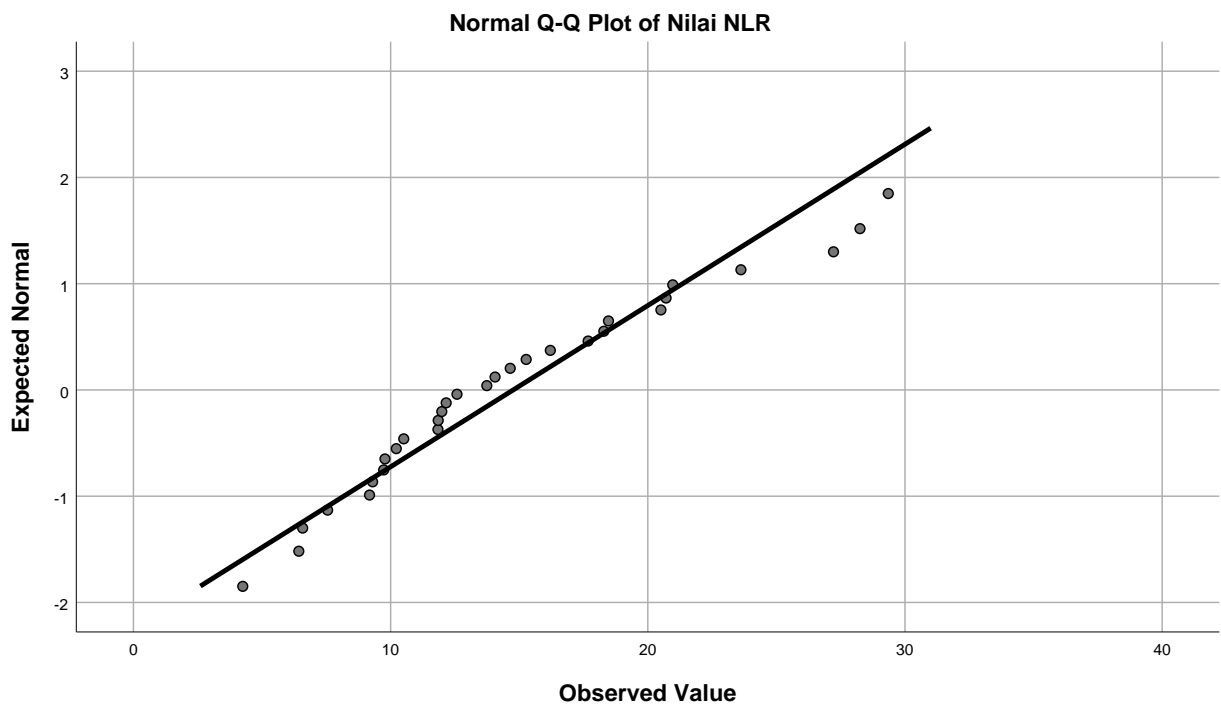
a. Lilliefors Significance Correction

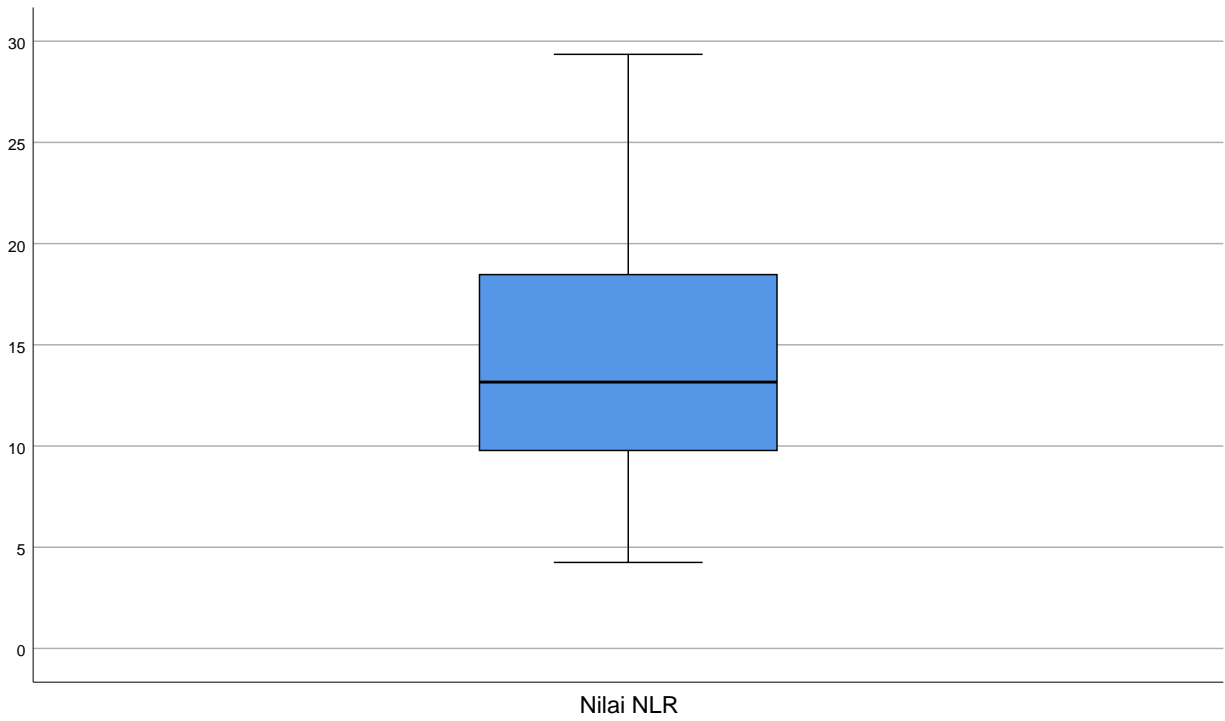
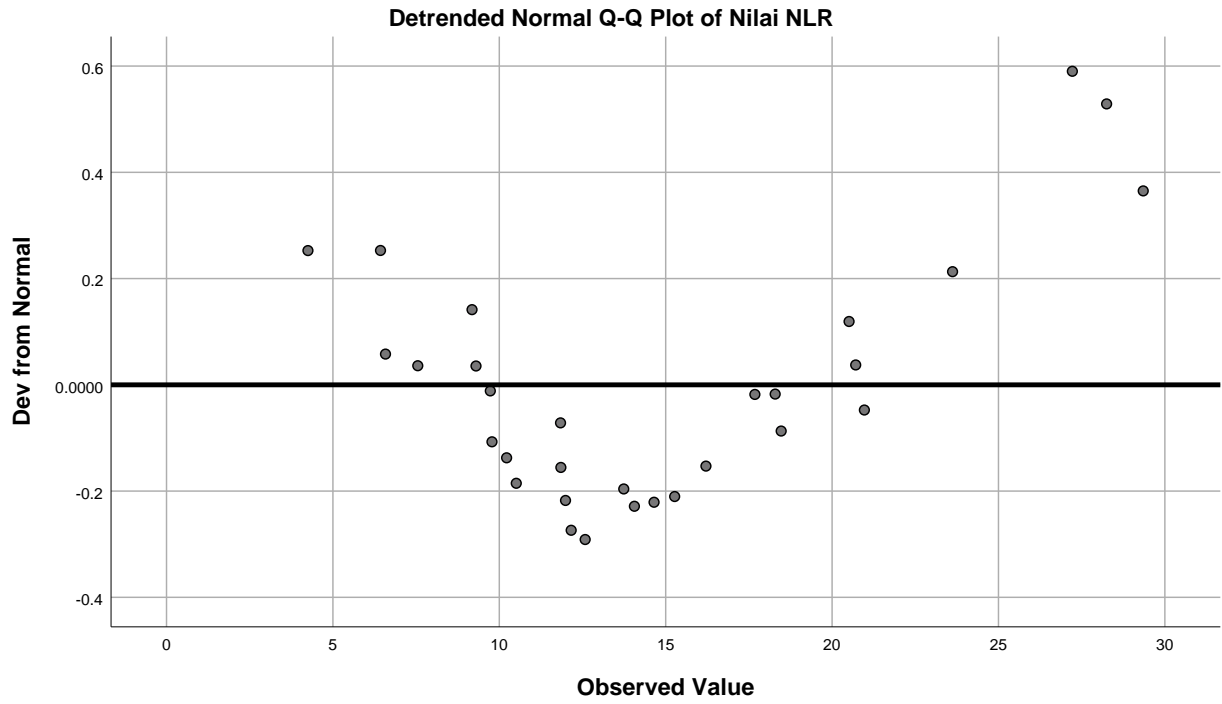
## Kadar Prokalsitonin



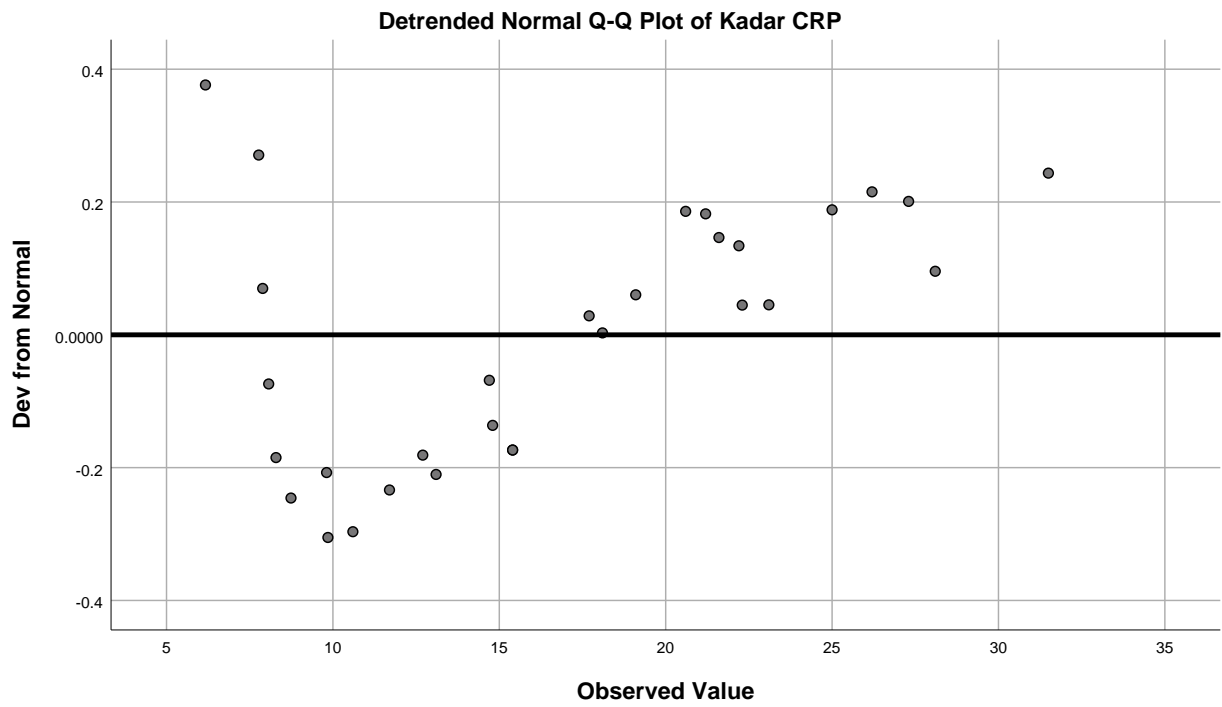
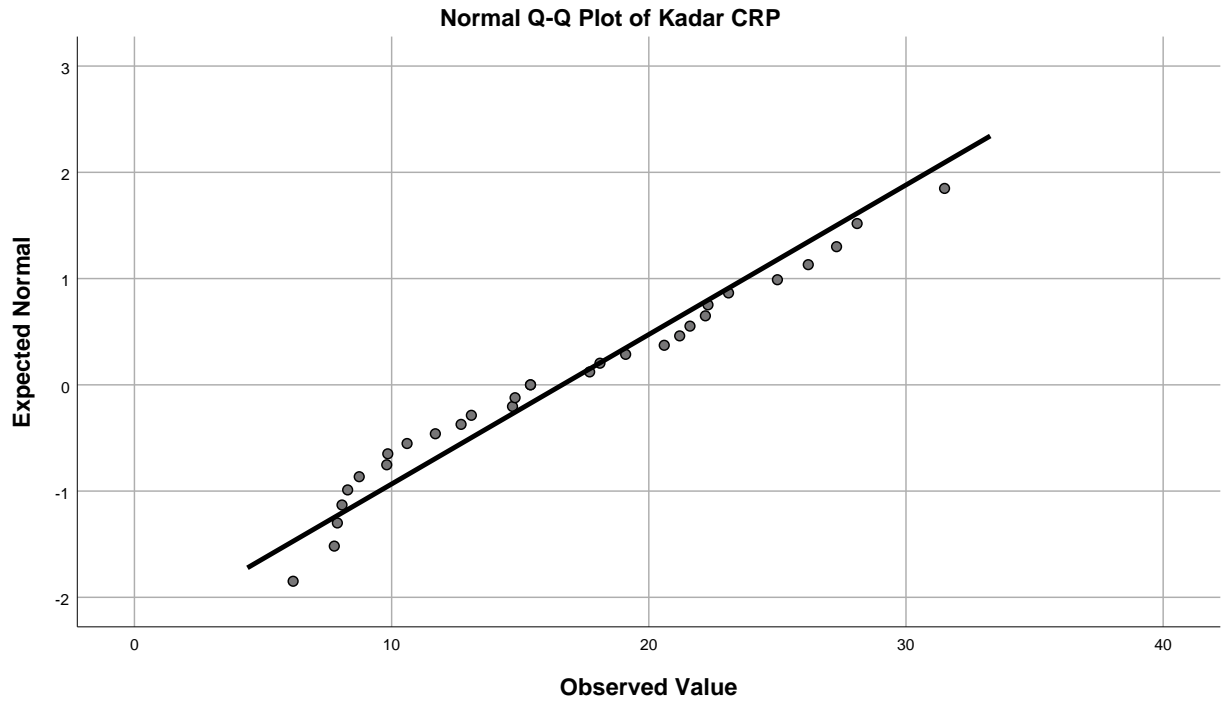


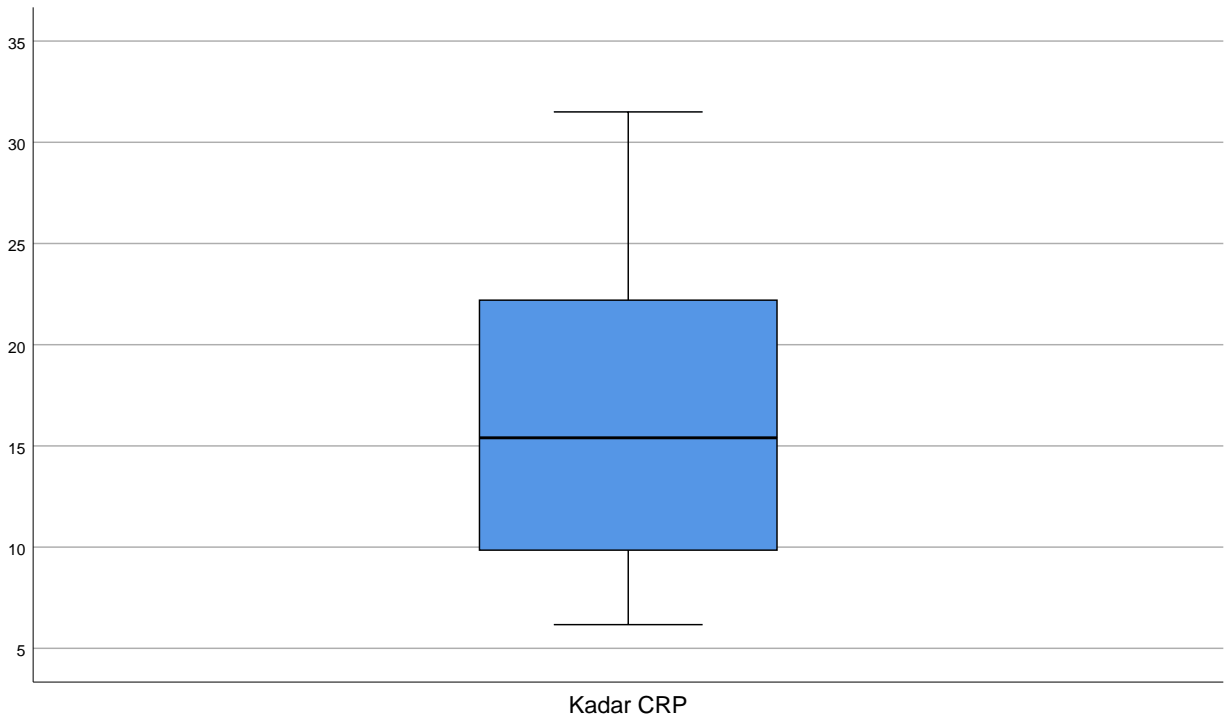
## Nilai NLR





**Kadar CRP**





#### CORRELATIONS

```
/VARIABLES=ProkalsitoninNLR CRP  
/PRINT=TWOTAIL NOSIG  
/MISSING=PAIRWISE.
```

### Correlations



## Notes

Output Created		11-JUN-2024 08:44:22
Comments		
Input	Data	C: \Users\Arry\OneDrive\Documents\Document Papa\DIV\Umsida\Ari\Data terbaru.sav
	Active Dataset	DataSet1
	Filter	<none>
	Weight	<none>
	Split File	<none>
	N of Rows in Working Data File	30
Missing Value Handling	Definition of Missing	User-defined missing values are treated as missing.
	Cases Used	Statistics for each pair of variables are based on all the cases with valid data for that pair.
Syntax		CORRELATIONS  /VARIABLES=Prokalsitoni NLR CRP /PRINT=TWOTAIL NOSIG /MISSING=PAIRWISE.
Resources	Processor Time	00:00:00,00
	Elapsed Time	00:00:00,02

### Correlations

		Kadar Prokalsitonin	Nilai NLR	Kadar CRP
Kadar Prokalsitonin	Pearson Correlation	1	.434 <sup>*</sup>	.403 <sup>*</sup>
	Sig. (2-tailed)		.017	.027
	N	30	30	30
Nilai NLR	Pearson Correlation	.434 <sup>*</sup>	1	.346
	Sig. (2-tailed)	.017		.061
	N	30	30	30
Kadar CRP	Pearson Correlation	.403 <sup>*</sup>	.346	1
	Sig. (2-tailed)	.027	.061	
	N	30	30	30

\*. Correlation is significant at the 0.05 level (2-tailed).